

HIOKI

日置

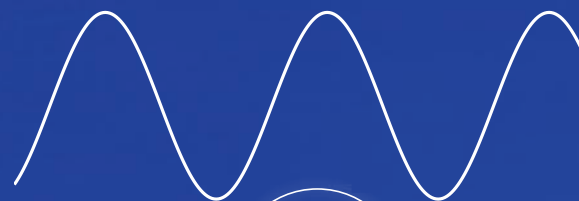
PQ3198 PQ3100

POWER QUALITY ANALYZER PQ3198, PQ3100



更简单、更可靠

电源的维护管理和故障分析



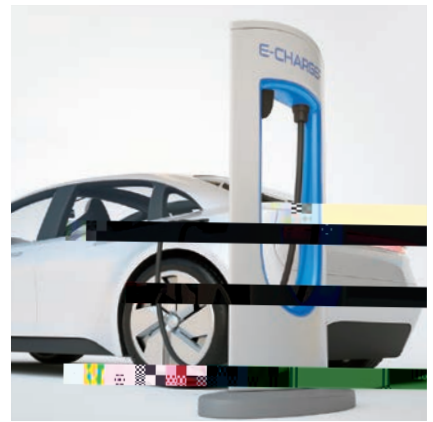


PQ3198



Class A
±0.1%

400 Hz



EV

CH1,2,3 CH4

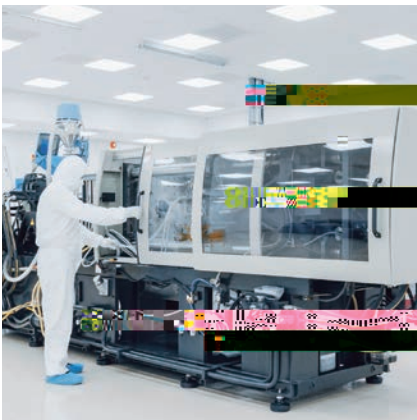
(DC)

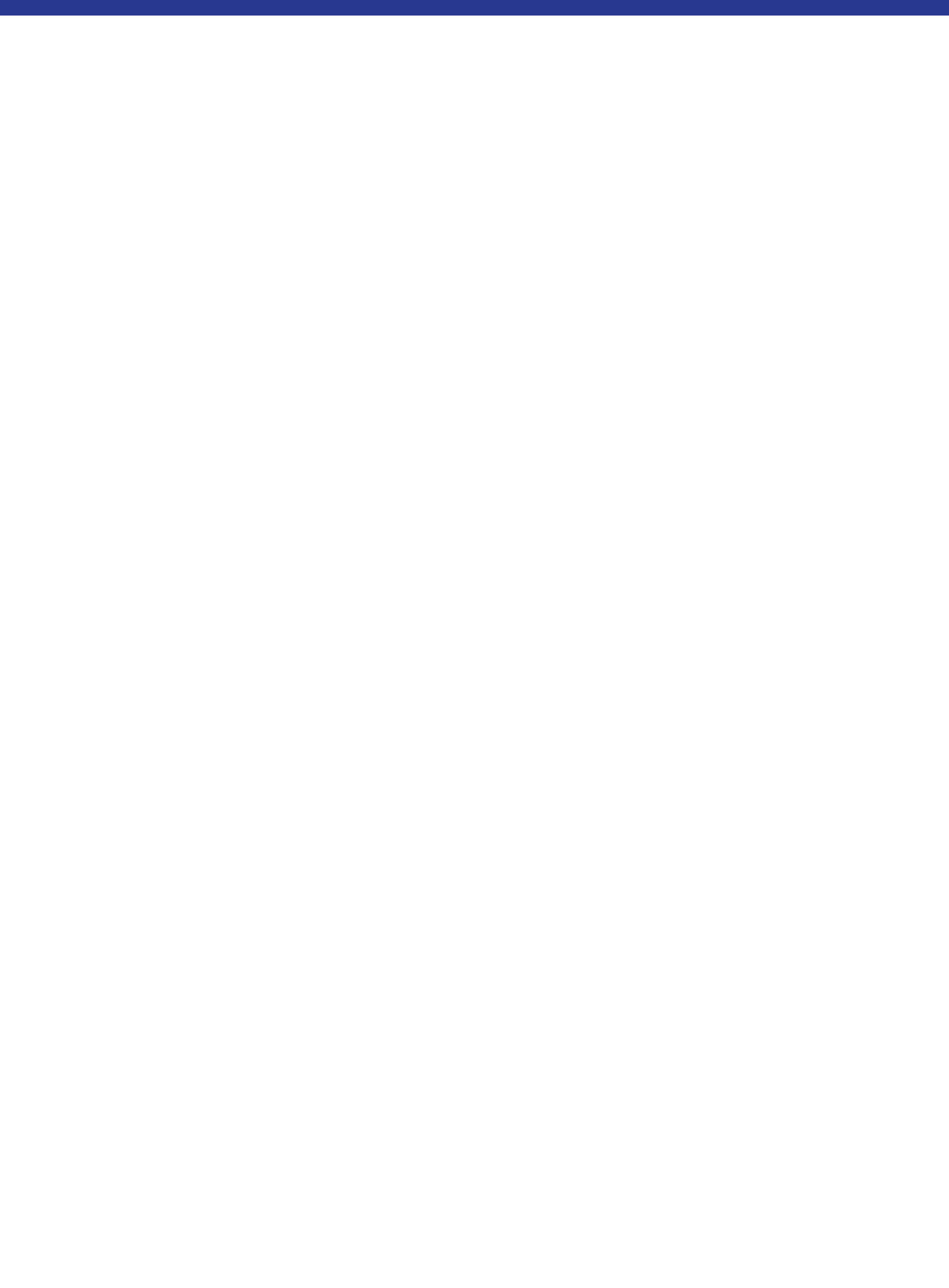
EV

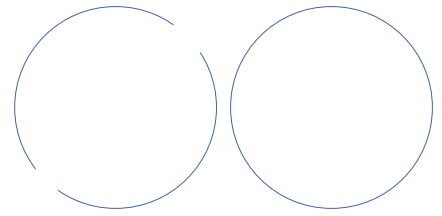
(AC)

/









2 ()



()
... 9804-01
... 9804-02



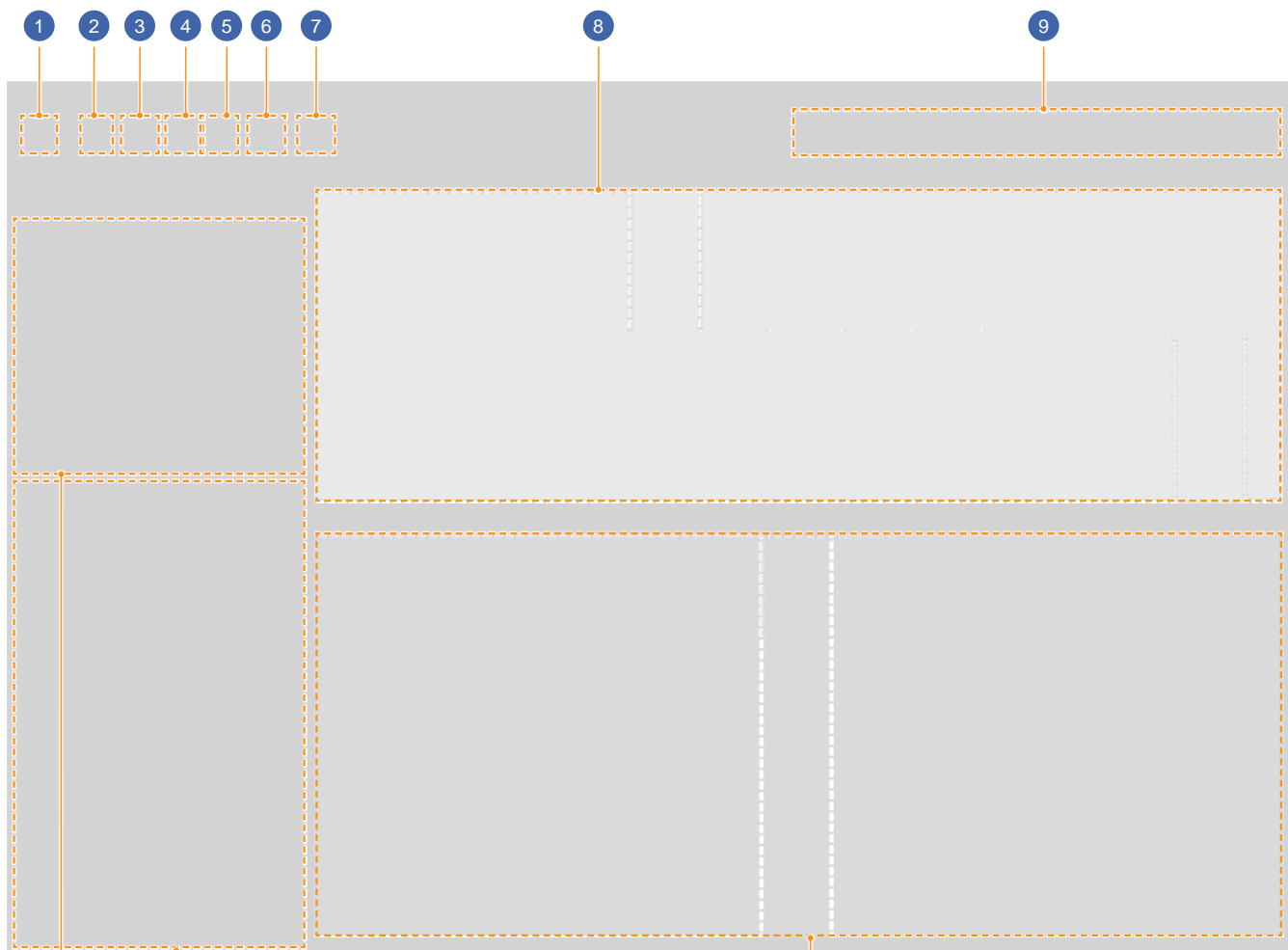
()

... Z5020
... Z5004

2GB

8GB

PQ ONE



10

11

12

1

2

3

4

5 CSV

6

7

8

9

10

11

12

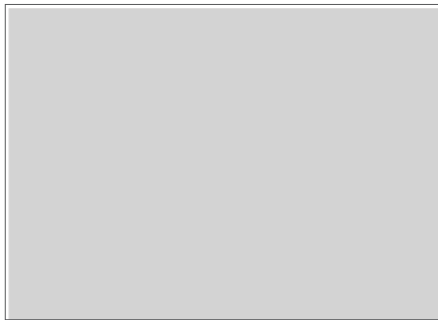
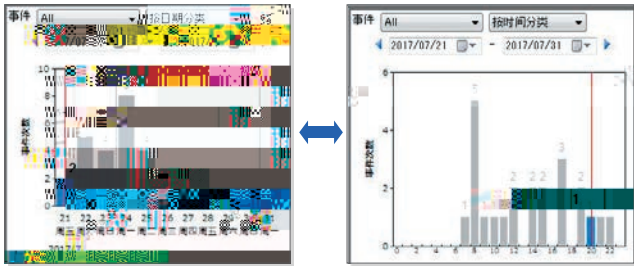
PQ ONE

-ITIC

PC

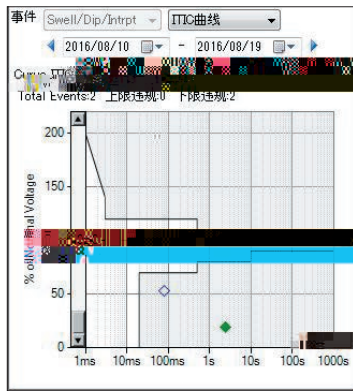
PQ ONE

PQ ONE



ITIC

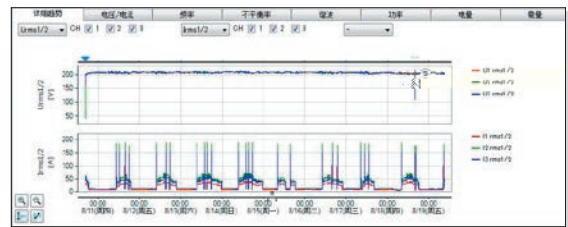
ITIC
()



ITIC

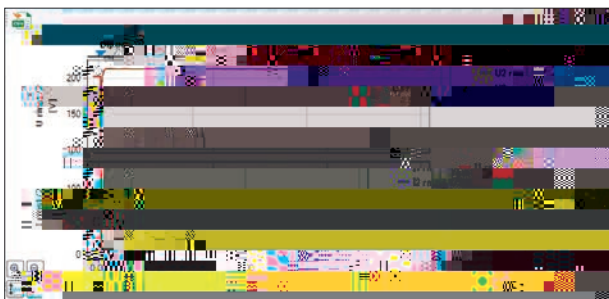
PQ3198

PQ ONE

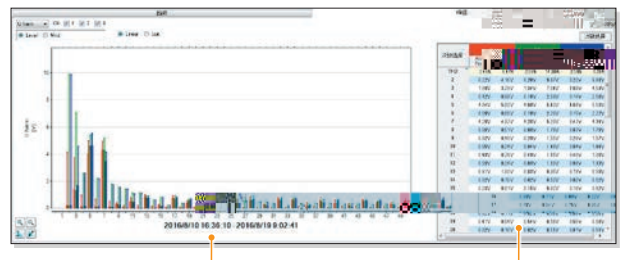


30

11 2 3
1 PQ3198 2 3 PQ3100

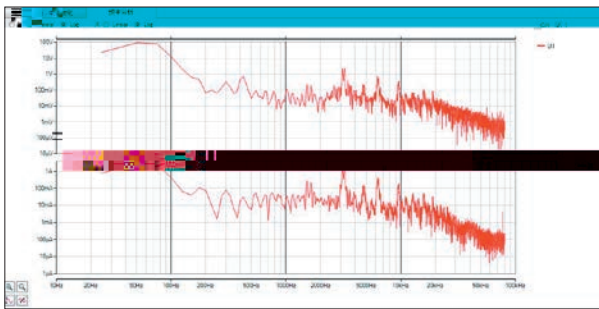


(30)



2 (2-80 kHz)

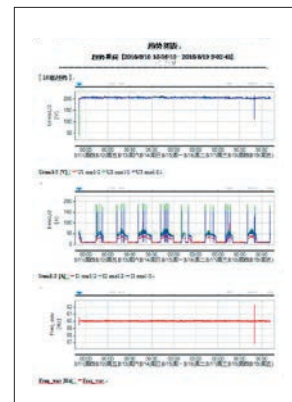
PQ3198



2

1 PQ3198 2

() (

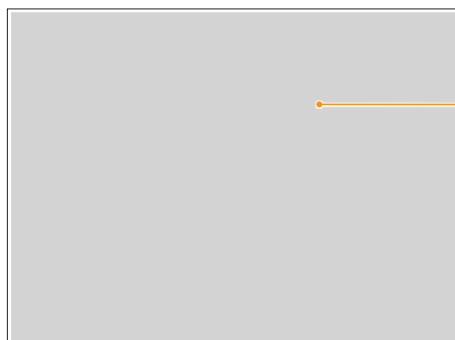


EN50160

EN50160

/ / / / /



电压/电流	频率	不平衡率	谐波(THD)	纹波	POC
Standards: EN50160 (UL&V)					
Time: 2016/8/10 16:06 - 2016/8/10 16:02					
Nominal Voltage (Line): 200V					
Mean Period of RMS Value: 10 min.					
Statistics: Per v...					
Week No. 1 = 2 [2016/8/10 16:36 - 2016/8/10 0:02]					
Week No. 1 [2016/8/10 16:36 - 2016/8/12 16:30]					
Frequency					
Range	Threshold	Compliance			
60Hz +0.9Hz / -0.9Hz	99.9%	N/A			N/A
60Hz +2.4Hz / -0.9Hz	100.0%	N/A			N/A
Supply Voltage Variations					
Range	Threshold	Compliance			
200V +10.0% / -10.0%	95.0%	100.0%	100.0%	100.0%	passed
200V +10.0% / -15.0%	100.0%	100.0%	100.0%	100.0%	passed




50/60Hz
PQ3198 400 Hz

	PQ3198	PQ3100
	: 4 /	
	() / (HIOKI PL 14)	
	2 3 2 4 2.5E 3 3 3 CH4 3 1 PQ3100 4	
	: AC 1000 V DC ±600 V	
	: AC/DC 1000 V	
	AC 600 V (CAT) 8000 V	AC 1000 V (CAT) AC 600 V (CAT) 8000 V
	: 200 kHz /	
	200 kHz	
A/D		
	: 0.48 V 780 V / : 0.5% 130% /	
	: 2 V 1300 V / : 0.4% 130% /	
	: 0.0% 130% 0% 130%	
	: AC 10 V 780 V ±2200 V / DC 1 V 600 V : 1% 120% ±400% } 0.15% 130% ()	: AC 10 V



	PQ3198	PQ3100
	EVENT IN /	
	0.5s 29.5s * *	0.5s 29.5s
	0% 10%	
	OFF	OFF
	2	OFF (0 s)
	OFF/1/2/3/4/5	OFF (0 s)
	COPY /	
		FILE F
	HIOKI PL 14	
	Z1003	
	Z4001 Z4003	
LAN	FTP	FTP FTP
)	
	()	. ()
	4 / ()	4 ()
	600 V CAT ² ()	1000 V CAT ² 600 V CAT ()
	0 30 () 30 50 ()	-20 50 ()
	10	
	IP30 (EN60529)	
	IEC 61000-4-7 IEC 61000-2-4 3 IEC 61000-4-30 EN 50160 IEEE 1159 IEC 61000-4-15	
	AC Z1002 AC100V~240V 50Hz / 60Hz / 2500V/ 80VA (AC) Z1003 5 30	
	3	8
	1	
	9999	
	24	
	±0.3s / (ON 23 ±5)	±0.5s / (ON)
	6.5 TFT	
	/ / (/) / / / / / / / /	
	300 (W)× 211 (H)× 68 (D) ()	
	(Z1003)	(Z1003)

	AC CT7126	AC CT7131	AC CT7136
			
	AC 60 A	AC 100 A	AC 600 A
(45 66 Hz) 120%		100.00 A 50.000 A 5.0000 A	500.00 A
	2	2	

AC CT7116	
	
	AC 6 A
	()
(45 66 Hz)	2
(45 66 Hz)	$\pm 3^\circ$
	40 Hz 5 kHz ()
	(100A)
	(50/60 Hz)
/ /	



PQ3198

	PQ3198	PQ3198-92	PQ3198-94
		 AC CT7136 (4)	 AC CT7045 (4)

直接工号 / 系列

268

4705

: 200

: 021-63343307, 63910090, 63910092

: 021-63

: 021-63343307, 63910090, 63910092

: 021-63910360

E-mail : weixiu@hioki.com